



# ANNUAL IMPACT REPORT 2025





**BASECAMP FOUNDATION KENYA**



EDUCATION  
Community based  
Education, Life Skills  
Care and Education  
(CEEL- ECCCE) –  
School Feeding  
Program in Ruseero  
Primary



A visit to the MGLS  
school Library



Games time at MGLS –  
Students vs



Ruseero Primary – 96  
Class Boyd Dormitory

... leave a positive footprint



# CONTENTS

ABBREVIATIONS	4
1. Who We Are	4
2. Background	5
3. Programs Overview	6
3.1 BCFK background	7
3.2 Thematic Areas	7
4. MODEL OF CHANGE	7
5. RESULTS BY PROGRAMME COMPONENT	8
5.1 Adolescent Girls Empowerment & Adult Literacy (BONGA)	8
5.1.1 FOCUS	8
5.1.2 KEY ACTIVITIES	8
5.1.3 Key highlights	9
5.1.4 Key results of Bonga in community	9
5.1.5 Outcome Analysis	10
5.2 Community Managed Savings Groups (CMSG)	10
5.2.1 Purpose	10
5.2.2 Key Activities	10
5.2.3 Key CMSG highlight Results	11
5.2.4 Outcome Analysis	12
5.3 Education Improvement – CBEI/ECCE & Mara Girls Leadership School	12
5.3.1 Purpose	12
5.3.2 Mara Girls Leadership School (MGLS)	13
5.3.3 Key Activities	15
5.3.4 Key Results highlights in CBEI/ECCE	15
5.3.5 Outcome Analysis	16
5.4 Green Villages & Community Institutions	16
5.4.1 Purpose	16
5.4.2 Key Activities	17
5.4.3 Results	17
5.4.4 Outcome Analysis	20
6. CROSS-CUTTING OUTCOMES	20
7. MONITORING & ACCOUNTABILITY	21
8. CHALLENGES AND ADAPTATION	21
9. SUSTAINABILITY	21
10. OVERALL PROGRAMME CONTRIBUTION	22

11.	PRIORITIES FOR 2026	22
12.	CONCLUSION	22
13.	SUCCESS STORIES	23
13.1	The Story of Irene Nampaso – Oloilepo Bonga, Ngoswani Cluster	23
13.2	Meet Mercy Gilisho – Olkimitare Cluster:	25
13.3	Emily Kipeen, 24, - Olkimitare Cluster:	26
13.4	Sylvia Gilisho, 25, Olkimitare Cluster:	27
13.5	The Story of Meirurae Women’s Group – Olesere Cluster	28
13.5.1	Background	28
13.5.2	Project Implementation	28
13.5.3	Outcomes to Date	28
13.5.4	Sustainability Model	28
13.5.5	Future Expansion Plans	29
13.5.6	Donor Engagement and Support Needs	29
13.6	Nasieku’s Journey: From Silent Struggles to Empowered Living - Ntipilikwani	30
13.7	Naboru Morijoi – Rekeru’s Resilient Entrepreneur - Rekeru	31

## ABBREVIATIONS

BCFK – Basecamp Foundation Kenya
BST’s – Bonga Support Teams
CBEI – Community-Based Education Initiative
CBO’s - Community-Based Organizations
CDO’s – Community Development Organizations
CMSG – Community Managed Saving Group
ECCE – Early Childhood Care & Education
F&P – Friends & Partners
KCB – Kenya Commercial Bank
MGLS – Mara Girls Leadership School
NARIGP – National Agricultural & Rural Inclusive Growth Project
NCDO – Nkoilale Community Development Organization.
NGAAF- National Government Affirmative Action Fund
SF – Stromme Foundation
SFN – Stromme Foundation Norway
SFEA – Stromme Foundation East Africa
T-o-T – TRAIN OF TRAINERS

# 1. Who We Are

Basecamp Foundation Kenya (BCFK) is a not-for-profit organization that has been working for nearly fifteen years with the marginalized Maasai communities around Naboisho Conservancy, adjacent to the vast Maasai Mara National Game Reserve in Narok County, Kenya. The organization strives to transform lives through innovative, sustainable development models anchored on four pillars: Education, Empowerment, Entrepreneurship, and Energy. BCFK implements its projects in partnership with the Stromme Foundation, Swedish and Norwegian family trusts, and other stakeholders. The organization is headquartered in Nairobi, with a field office at the 'Biotisho/Green Center' in Talek Township, Koiyaki Location, Siana Ward, Narok South Sub-County.

# 2. Background

This report presents the outcomes/results of the development missions implemented by Basecamp Foundation Kenya in corporation with Stromme since 2023 to date. Basecamp Foundation Kenya (BCFK) is non-profit organization that defines its work as transforming lives- leaving a positive foot print by being an innovator of models for sustainable development through community empowerment and conservation. This is made possible through implementation of projects in partnership with Stromme Foundation in the areas of education, empowerment, environment, entrepreneurship and clean energy which have been undertaken successfully in Narok West, Koiyaki Location, in the interior of Naboisho Conservancy in Talek along the famous Maasai Mara national reserve.

Working in the villages neighboring to the Naboisho conservancy which is a Community leased land for tourism and wildlife conservation, the activities were premeditated and implemented in six thematic areas which are: Community Based Education Intervention Project (CBEI); Mara Naboisho Adolescent Girls Empowerment Project (Bonga); Mara Naboisho Community Managed Saving Groups Project (CMSG); Community Empowerment Centre for Maasai Mara (Talek Green Centre); Community Institutions and Leadership (Green Villages) and Mara Girls Leadership School (MGLS). Naboisho Conservancy is one of the community managed wildlife conservation areas that lie next to the State ruled Maasai Mara National Reserve.

Community Based Education Intervention (CBEI) project activities include capacity building of the schools' Boards of management to effectively manage schools, Parents teacher's associations' seminars & Early Child Development. It also aims on improving, maintaining and developing school infrastructure as a complement strategy for, providing high-quality education to children, promoting retention and improving performance of children. On its part, the Bonga program specifically targets, adolescent girls and young mothers in order to address challenges associated with negative cultural practice such as, early marriage, female genital mutilation and early childbirth. The community managed Saving Groups (CMSG) project aims at empowering women by

providing an avenue by which they can, save, invest and access loans to start micro and small businesses.

The Talek Green Centre is a community education and empowerment center that is intended to serve as a demonstration centre for sustainable development concepts. These concepts include solar energy solutions, a showcase of micro-small businesses and innovations in the Mara. The Community institution program (Green Villages) aims at promoting development concepts addressed and acquired at the Green Centre at village level. Its main focus is to providing access to adequate clean water for domestic and livestock use, improve access to quality education for all children, address illiteracy among women and youth through vocational skills trainings, providing access to renewable energy and sustainable waste management.

The Mara Girls Leadership School (MGLS) is a model school established by BCFK with an inclusive goal of securing primary education leading to effective qualification for the most talented vulnerable girls during their most intricate school years (grades 7,8 and 9). Furthermore, from perspective in which the Naboisho and Maasai Mara community live, Basecamp seeks to safeguard wildlife and ecosystem, mainly concentrating on working with landowners. This project intervention is critical because wildlife forms an integral part of the community's culture, economy and future prospects..

### **3. Programs Overview**

During 2025, Basecamp Foundation Kenya implemented integrated community development interventions addressing poverty drivers affecting pastoralist communities surrounding the Mara ecosystem. Based on its four pillars: Education, Empowerment, Entrepreneurship and Energy, BCFK implements 5 core projects. Community-Based Education Intervention Program (CBEI); Adolescent Girls Empowerment Program (Bonga); Community Managed Savings Group Program (CMSG); Mara Girls Leadership School (MGLS / Talek Green Centre); Civil Society - Community Institutions and Leadership (Green Villages). The programme combined education, adolescent empowerment, women's economic strengthening, community governance, and climate resilience to create reinforcing pathways out of vulnerability.

The implementation strategy emphasized Behavioural change and community ownership rather than short-term service delivery. Activities were therefore designed to transition beneficiaries into self-managed structures — including savings groups, Bonga forums, and education-school support systems — capable of sustaining change beyond project support.

Across the reporting period, programme implementation remained stable with high participation levels and increasing community leadership in programme management.

By the end of the year, over 5670 individuals were directly reached, and an estimated of 7, 7890 indirectly benefited through improved households'

stability, peer influenced, and school-level reforms.

### 3.1 BCFK background

Basecamp Foundation Kenya (BCFK) is a not-for-profit trust working with the marginalized Maasai communities around Naboisho Conservancy, adjacent to the vast Maasai Mara National Game Reserve in Narok County, Kenya, for almost fifteen years. The organization aims to transform lives through innovative sustainable development models anchored on its four pillars; Education, Empowerment, Entrepreneurship, and energy. This is done through the implementation of projects in partnership with Stromme Foundation, Swedish and Norwegian family trusts among other stakeholders. The organization is headquartered in Nairobi and has a field office at the 'Biotisho / green centre', talek township, Koyaki Location, Siana ward, Narok South sub-county.

Vision: To be a leading & showcased organization of sustainable community development, in Kenya and beyond.

Mission: To leave a positive footprint by transforming lives through empowerment

### 3.2 Thematic Areas

- |    |   |         |            |         |
|----|---|---------|------------|---------|
| 1. | Education<br>a) MGLS                            | Support | -CBEI/ECCE | Program |
| 2. | Bonga -Adolescent Life Skills Program           |         |            |         |
| 3. | Community Managed Savings Groups (CMGs) program |         |            |         |
| 4. | Civil society/Green Village Program             |         |            |         |

## 4. MODEL OF CHANGE

The programme operates on the premise that poverty in rural pastoralist communities is sustained by overlapping constraints:

- ◇ low literacy and education access
- ◇ Gender inequality and harmful social norms/practices like FGM, early marriages and teenage pregnancies.
- ◇ weak household economies
- ◇ climate vulnerability
- ◇ limited local governance capacity

The program, therefore, applies a covered response:

Level	Intervention	Expected Change
Individual	Literacy, life skills and economic empowerment	Intervention and confidence
Household	Savings, parenting skills and income generation activities	Economic stability
Group	Bonga Forums, savings groups, clusters and federation	Mutual accountability
Community	Governance structures through CDOs	Social norm change
Environment	Adaptation practices, tree planting in schools	Livelihood resilience

## 5. RESULTS BY PROGRAMME COMPONENT

### 5.1 Adolescent Girls Empowerment & Adult Literacy (BONGA)

#### 5.1.1 FOCUS

To empower adolescents with the ability to resist social pressures and make sound judgments. Therefore, Life Skills Training sessions were developed from awareness talks to accountability sessions conducted by peers. Participants shared actual challenges they face, establishing a safe space for learning and support.

Bonga in school: Teachers noticed better discipline and confidence among students, while participants showed better judgment in relationship management, time management, and study habits.

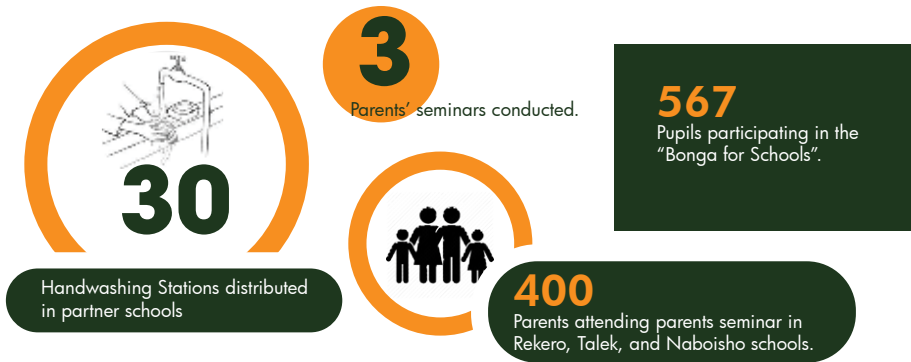
#### 5.1.2 KEY ACTIVITIES

- ◇ Community sensitization meetings with leaders and families were conducted in Ngosvani, Nkorrobbob, and Lemek
- ◇ Establishment of three Bonga Life skills learning centers with 89 participants
- ◇ Functional literacy and numeracy training linked to daily activities to improve literacy among the participant
- ◇ 3 Parenting and life skills discussions for the young mothers in every Bonga centre

- ◇ Income-generating skills training
- ◇ Formation of peer forums for continued engagement in savings activities and linkages to the financial institutions.
- ◇ Bonga in school sessions reached to 567 boys and girls.

In 2024/2025 the programme introduced an adaptive adult literacy model targeting older women who previously missed formal education but remain central to household decision-making

### 5.1.3 Key highlights



### 5.1.4 Key results of Bonga in community

- ◇ 67 completed literacy and life skills training in community
- ◇ 567 students participated in Bonga session in schools
- ◇ 7 forums registered as self-help groups
- ◇ 258 members actively saving
- ◇ Women from the Bonga forums independently using mobile banking
- ◇ Community advocacy against harmful practices strengthened
- ◇ One group of 10 members accessed public enterprise financing

### 5.1.5 Outcome Analysis

902 Bonga Participants moved beyond awareness to practical application. Literacy was used in financial transactions, health decisions, and school

planning. Weekly peer forums reinforced Behavioural change and created collective accountability against early marriage and FGM.

The programme increasingly functions as a community protection mechanism rather than a standalone training intervention.



*Bonga literacy classes in progress at Nkoilale.*

**Impact:** Adolescents ( girls/boys and young mothers) Protection is now internal, not imposed by external forces.

## 5.2 Community Managed Savings Groups (CMSG)

### 5.2.1 Purpose

Improve livelihoods for the rural women through enhanced income generation. Strengthen household economic resilience and reduce vulnerability to income surprises.

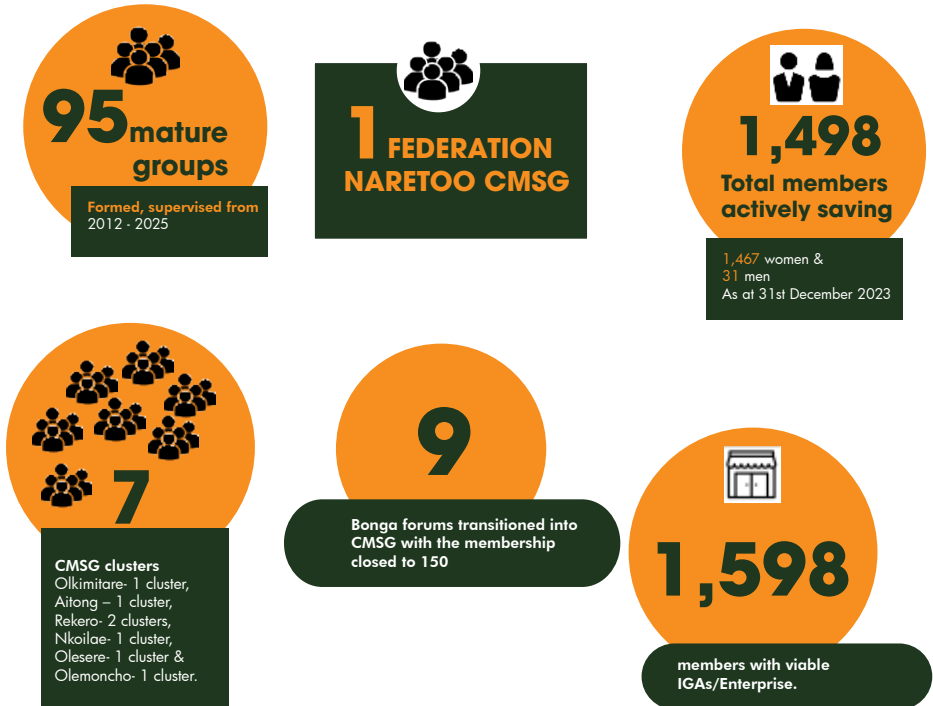
### 5.2.2 Key Activities

- ◇ Financial literacy training. 9 Bonga forums transitioned into savings groups with the members of 200 women.
- ◇ Record-keeping and loan management support training reached to over 200 women
- ◇ Cluster formation for the 9 Bonga forums
- ◇ Peer learning exchanges among the 7 clusters, and 9 forums.
- ◇ Linkages to government enterprise funds (Youth and women funds)



Mobile banking and records keeping training sessions at Ngoswani.

### 5.2.3 Key CMSG highlight Results



Members shifted from irregular saving patterns to structured savings cycles aligned with seasonal income. Groups began financing productive investments instead of consumption loans.

### 5.2.4 Outcome Analysis

Over 1500 Savings groups now act as informal social protection systems. Households reported improved ability to keep children in school during drought periods. Trust within groups increased, enabling loan guarantees and collective business ventures. The intervention strengthened both economic stability and social cohesion.

**Impact:** Economic resilience translated directly into families' livelihoods improvement and protection.



*Value addition training to CMSG groups at Olesere and Olare Orok*

## 5.3 Education Improvement – CBEI/ECCE & Mara Girls Leadership School

### 5.3.1 Purpose

Promotes access quality education for the marginalized and disadvantaged groups. The activities were tailored to focus on: Improve retention, performance, and transition of vulnerable learners, particularly girls.



*Teachers training on bonga curriculum*



*Bonga for boys in schools' sessions*

Both the CBEI and ECCE programs promote the provision of quality primary school education in the community we work with. It focuses on collaborative engagements with the school leadership, board of management and parents to foster collective responsibility to quality education for their children. This is done through investment in school infrastructure, improvement of the learning environment by providing feeding program, Colorful motifs, parental seminars and boards of management, forums for Community participation on involvement in education like parents' seminars, Bonga in schools session for both boys and girls and developing school clubs in areas like conservation. The ECCE program focuses on the promotion of education for early learners, ages 3 – 8years. Improve the protection, literacy, and economic participation of adolescent girls and boys, while addressing harmful practices.



*Bonga TOT sessions trainings*



*Bonga in schools' session at MGLS*

### **5.3.2 Mara Girls Leadership School (MGLS)**

Mara Girls is a model school for talented Maasai girls. It has been in operation since January 2017. Its focus is to provide quality primary school education to talented Maasai girls ages 12 – 14 at the upper primary level (Class 6- 8). The school originally comprised single-stream classes of 16 pupils each and a maximum population of 48 pupils per annum.

However, with the transition to a junior secondary school under the CBC (2-6-3-3-4) curriculum, we hope to maintain the three single streams of 30 girls each in line with the Ministry of Education requirements and eventually aim to house 90 girls within the complex. The second intake of Grade 7 students took place in January 2024, and in the same year, the final Class of the 8-4-4 system joined secondary schools in January.

#### **a) Mara Girls Leadership – Junior Secondary School**

The school now transitioned into Junior secondary school with 72 learners in session. The school has also participated in extracurricular activities such as music festivals and sports. The girls proceeded to regionals in sports in netball, football and volleyball.

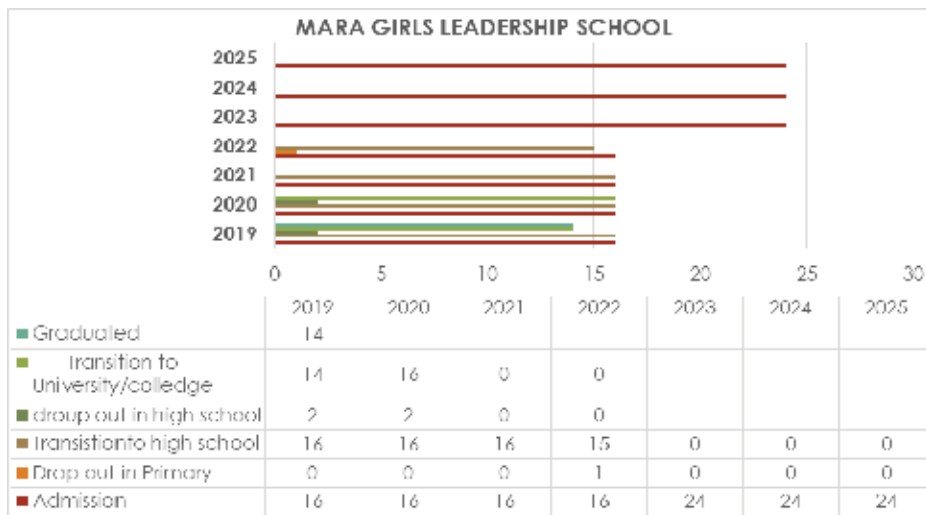
## b) Mara Girls Leadership Alumni Meeting

The meeting was held at the green centre with the 28 MGLS alumni students as the exposure to career opportunities through alumni engagement and numerous positive impacts on academic, professional, and personal growth were discussed. BCFK through MGLS empowers students to envision and achieve successful careers while fostering a culture of lifelong learning and professional growth among the Maasai girls.

## c) Girl child Day celebration at MGLS

During the Girl Child Day celebration, MGLS girls were at the forefront to engage in the discussions of numerous positive impacts on the communities, including: raising awareness, encouraging girlchild education, inspiring Girls, community engagement, policy Advocacy, promoting positive role models, challenge harmful cultural practices and strengthening partnerships. MGLS under BCFK is not only acknowledging the value of girls but is also committed to creating an environment where they can thrive and contribute meaningfully to society.

## Mara Girls leadership school result highlights since 2019-2025



## Bonga for schools

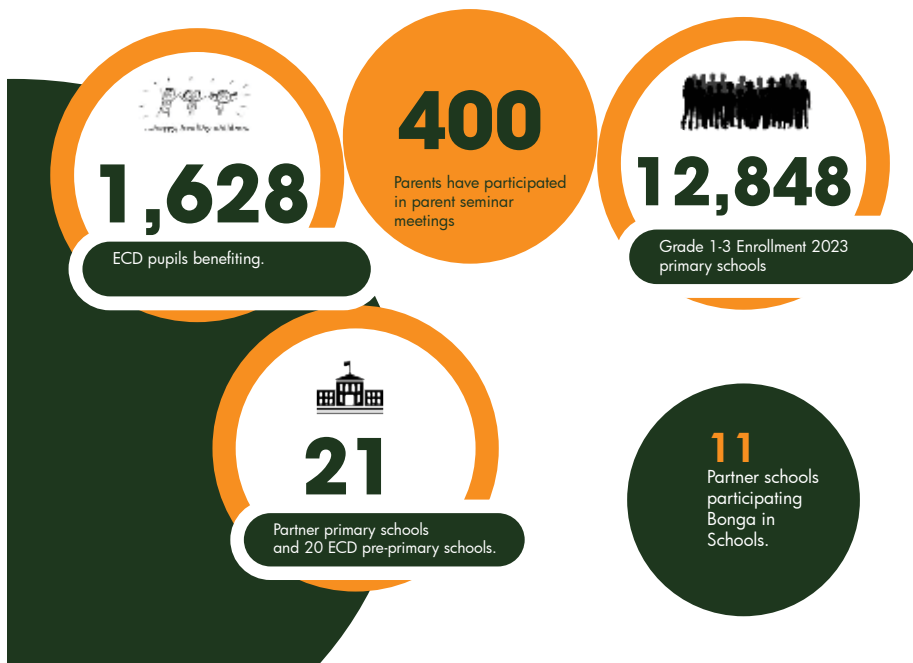
The 'Bonga for Schools' program has gained momentum since we rolled out the program. So far BCFK has partnered with 5 schools using the approach to address adolescent issues like teenage pregnancy, early marriage, and school dropout. 11 partner schools participated in Bonga sessions for both boys and girls with 567 participants. BCFK recommends that each partner school have monthly Bonga discussions to ensure that challenges surrounding adolescence

are addressed early enough. The discussion forums often vary depending on the school's approach. Some schools include girls only and others have both boys & girls in the program. Mara Girls Leadership School Bonga program recruited new girls in grade 7 and has successfully, held three sessions since we opened school. The Bonga classes were successful in discussing the following: Self-awareness, empathy, and critical thinking to enlighten the new girls.

### 5.3.3 Key Activities

- ◇ School-based adolescent discussion sessions (Bonga in school)
- ◇ 3 Parent engagement seminars reaching over 400 parents both men and women
- ◇ Alumni mentorship sessions for MGLS
- ◇ Co-curricular participation - Curriculum-Based Education was engaged
- ◇ School governance strengthening

### 5.3.4 Key Results highlights in CBEI/ECCE



- ◇ 11 schools implementing adolescent support sessions and reached 567 boys and girls
- ◇ Over 400 parents engaged in parent seminars in 3 partner schools
- ◇ MGLS Junior secondary operational with 72 learners
- ◇ Zero pregnancy cases reported in participating schools
- ◇ Termly review of enrollment - (data in the partners' schools ECD/ Primary/ JSS)
- ◇ STEM Training for 21 partner schools (Technical skills) -272 grade 9 learners and 46 teachers participated in Competence Based Education training from the government expert.
- ◇ Train school Environmental clubs in 7 schools on climate adaptation strategies during the world environmental day.
- ◇ World Environmental day was commemorated with 7 partner schools reaching 275 learners
- ◇ 3 partner's schools Parenting seminars reaching 400 men and women
- ◇ Bonga in schools' sessions - Adolescents awareness program - ToT Training reaching 11 teachers from 11 partner schools
- ◇ Advocacy and participation in promoting education within the Community - Education Day

### 5.3.5 Outcome Analysis

Behavioral change was observed among both 12, 848 learners and parents. Parents increasingly support girls' education and communicate openly about adolescent challenges. Students demonstrated higher confidence and aspirations, supporting sustained school attendance, retention, discipline, confidence and performance improvement. The school functions as a demonstration model influencing neighboring communities.

**Impact:** The children retention in schools is stronger now not because they were being helped, but because their parents had started valuing education as an investment, and the development of the community as whole through improving skills and knowledge.

## 5.4 Green Villages & Community Institutions

### 5.4.1 Purpose

Green village is a concept that embraces the use of renewable energy and other livelihood techniques that conserve the environment. Promote climate resilience and community-led development governance.


### 5.4.2 Key Activities

- ◇ Participate in Mara managers Association (MMA) AGM
- ◇ Participate in events promoting the Mara ecosystem – Mara Day celebration (preserving Mara for posterity) - participated in Maasai Mara partner organization workshop.
- ◇ Community quarterly Eco-storm meetings - progress review of 4 Community Development Organizations
- ◇ Tree planting during the world environmental day and in partnership with Egerton University student at Olchorrura Comprehensive School where 100 trees were planted.
- ◇ Community governance capacity building at Olesere CDO

### 5.4.3 Results

Households replicated small-scale gardens and adopted water conservation practices. Community development committees improved transparency and reduced leadership disputes.

**5**



**CDOs' Formed**

Nkoilale, Olesere, Olare Orok, Rehero, Endoinyo -Erinka

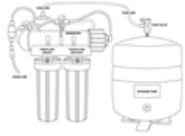
**5**



**Rainwater Harvesting Systems**

MGLS, Rehero, Olare Orok, Olesere, Olemoncho.

**1**




**RO-Reverse Osmosis system** at Talek Primary formed

**1**



**Spring catchment**  
At Olemoncho Village

**4**



**Institutions benefiting from solar energy**

MGLS, Rehero, Olemoncho spring, Talek Boarding



**BASECAMP FOUNDATION KENYA**

Our Mission: To leave a positive footprint, by transforming lives through empowerment.  
Our Vision: To be a leading and showcased organization of sustainable community development in Kenya and beyond.  
Our programs promote community-led empowerment models that ensure sustainability, inclusivity, embracing culture as a source of financial freedom, value addition and access to markets.



Skagerak Energi field visit in 2025



Sromme Tanzania field visit 2025



Å Energi field visit 2025



Mazingira Day 2025

Dr. Lars 2025 visit



... leave a positive footprint





*Engagements at community institutions that have been built in collaboration with BCFK*

#### 5.4.4 Outcome Analysis

Community-led development activities strengthened safeguards while governance structures improved collective decision-making. Communities began initiating environmental activities independently, indicating ownership. 320 participants, men, women and students were directly involved in different activities in Green village program.

**Impacts:** Communities, started adapting to community-led development initiatives, climate change and adaptation without responding to climate variability.

## 6. CROSS-CUTTING OUTCOMES

Theme	Observed Change
Gender Equality	Women increasingly involved in financial decisions through savings groups
Child Protection	Zore teenage pregnancy and FGM cases report among the MGLS learners

Governance	Transparent management of groups funds among the Bonga forums and savings groups
Climate Resilience	Adoption of drought-adaptive practices, tree planting, rotation grazing within the conservancies has reduced pastoral movement during the dry seasons
Social Cohesion	Increased dialogue and reduced conflicts

## 7. MONITORING & ACCOUNTABILITY

Monitoring combined routine supervision, community review meetings, and partner verification visits. Data tracking confirmed active participation and functioning community structures.

External verification visits validated programme presence and community ownership.

## 8. CHALLENGES AND ADAPTATION

Minor weather-related access challenges occurred but did not significantly affect implementation. Flexible scheduling and community facilitators ensured continuity.

Economic pressures on households were mitigated through savings groups acting as resilience mechanisms.

## 9. SUSTAINABILITY

Sustainability is embedded through:

- ◇ Community facilitators instead of external trainers
- ◇ Self-managed savings institutions (clusters, self-help groups, forums and federations)
- ◇ Peer forums continuing beyond training cycles- 10 Bonga forums registered as self-help groups
- ◇ Parent and alumni involvement in education in Mara Girls leadership school and other public partner schools to strengthen education in the community.
- ◇ Bonga forums, Clusters, and savings groups linkages with public financing structures like National affirmative action funds, youth and women funds.

Communities increasingly run meetings and activities independently. This is evidenced in the forums and savings groups that are currently operating with minimal supervision.

## 10. OVERALL PROGRAMME CONTRIBUTION

The programme produced multi-level change:

- ◇ Individuals gained confidence and practical skills through life skills and Income Generating trainings.
- ◇ Households stabilized economically
- ◇ Social models began shifting
- ◇ Community institutions strengthened
- ◇ Environmental practices adopted in partner school and within the CDO in the community

The strongest indicator of sustainability is the continuation of Bonga forums and savings activities without project facilitation.

## 11. PRIORITIES FOR 2026

1. Expand the adult literacy-Bonga model to additional villages
2. Strengthen savings group federations
3. Support junior secondary education transition
4. Introduce climate-smart livelihood pilots
5. Develop a structured impact measurement system

## 12. CONCLUSION

The 2025 programme demonstrates that integrated community-based interventions generate sustainable development outcomes when communities assume ownership of structures created.

The partnership between Basecamp Foundation Kenya and Strømme Foundation has progressed from service delivery to locally sustained systems that continue influencing behaviour, education retention, and household resilience.

The programme is therefore positioned for scale and long-term impact within pastoralist communities.



## 13. SUCCESS STORIES

### 13.1 The Story of Irene Nampaso – Oloilepo Bonga, Ngoswani Cluster

#### **“I Decided Enough Was Enough.”**

Before joining the Oloilepo Bonga forum, Irene Nampaso lived a life many rural women know too well confined to the home, dependent on her husband's income and quietly enduring the growing pressures of motherhood. “After I got married at a young age of 20 years, I was just a housewife,” she recalls. “I could only sit and wait for my husband to provide.” But when her first child arrived, the cracks in that system deepened. Personal needs multiplied and the family income could no longer stretch to meet them.

Her husband worked hard, but Irene felt a stirring inside, a desire to contribute, to change her family's story. “The situation was dire,” she says. “I decided enough was enough. I needed to do something.”



## Joining the Bonga Forum

Irene's turning point came when she heard about the Oloilepo Bonga forum from fellow women around. Drawn by the promise of learning and sisterhood, she joined with quiet determination. What she found was more than training, it was transformation.

Through the forum, Irene gained beadwork skills rooted in Maasai tradition but adapted for modern markets, financial literacy and savings training, enabling her to manage and grow her income, digital literacy for opening doors to online platforms and mobile banking and confidence, nurtured through peer support and leadership opportunities.

## Breakthrough Moment



*Irene fitting some of the clothing which she sells.*

After she graduated from the Bonga sessions/forum, Irene needed to put her skills into use for her benefit. She did not abandon the forum; she kept rallying fellow women and girls to join and reap the benefits in the forum. Her first breakthrough came when she was able to convince fellow women who had graduated and those who were still going through the sessions, they formed a small group of like-minded women and decided

to start weekly contributions of as little as one hundred shillings (100/-) and were able to save the money and later bought goats, which they are rearing and hope to sell for profits, to start even bigger projects from the sales even as they continue with the weekly contributions.

She is also doing her small business where she does her own beadwork and sells whenever she is able to. She is looking forward to the full realization of the Naretoo federation flagship to be able to take advantage of local exhibition



*BCFK Staff for a photo session with forum members .*

linked to Naretoo. That moment seeing her work valued and purchased will be a spark.

### **Impact**

Today, Irene is no longer waiting she's leading. She is a bonga forum animator, her income supports her children's school fees, her voice carries weight in community meetings, and her story inspires other women to rise. "I used to feel stuck," she says. "Now I feel strong. I can help my family, and I can teach others."

Her journey reflects the power of community, tradition and innovation working hand in hand. Irene is not just a beneficiary, she is a beacon

## **13.2 Meet Mercy Gilisho – Olkimitare Cluster:**



A bright-eyed 23-year-old. She carried the weight of an all-too-familiar story: married at 18 after dropping out of school, she walked into adulthood without a single marketable skill. "I depended on my parents for everything," she recalled, "and I had no idea how to survive in marriage." In those early months, Mercy often went to bed hungry,

her dreams of education and independence slipping further out of reach.

Everything changed the day BCFK animators invited her to the Bonga Forum. With her husband's blessing, she attended workshops on life skills, entrepreneurship, household cleanliness, and personal hygiene. "For the first time, I felt someone believed in me," Mercy said. Guided by patient mentors, she learned to budget, price goods, and maintain a healthy living environment.

Encouraged by her new confidence and backed by a small seed fund from her husband, Mercy set up a modest retail stall in the local market. Sales trickled

in, and she carefully tucked away each shilling. Within weeks, she purchased her first goats and sheep, becoming both a retailer and a pastoralist. Joining a table-banking group gave her access to small loans, which she used to expand her small business stock. Meanwhile, evening sessions at the forum taught her basic digital literacy.

Today, Mercy markets her wares not only at the market center but also online, posting goat and sheep photos to local WhatsApp groups. From a young bride with no prospects to a savvy entrepreneur and digital marketer, Mercy's journey shows how targeted training, family support, and simple savings mechanisms can rewrite a life.

### 13.3 Emily Kipeen, 24, - Olkimitare Cluster:



Her calm presence spoke louder than words. Married at 21, she stepped into her new home unprepared for the realities of marriage. "I thought I'd only cook and wait for my husband to provide," she confessed, recalling days when she had nothing to offer but chores and the weary care of a mother-in-law who rarely showed her kindness. Emily's world shifted the moment a mentor invited her to the Bonga Forum.

Under the acacia-dappled shade, BCFK trainers guided her through survival and life-skills sessions, teaching her not only household hygiene and self-care but also the deeper threads of family values, how to nurture relationships with husband and children. A spark of entrepreneurship ignited

when she learned basic business planning. Emily returned home and sowed her first kitchen garden, planting kale, spinach, and tomatoes. With the same hands, she built a simple chicken pen and stocked it with chicks. The vegetables and eggs she sold at the market bought her children clothes and a measure of security she had never known.

Fueled by confidence and seed savings from her youth group, Emily took a bolder step: she opened a small roadside hotel. Every morning, she cooked traditional stews and grilled maize on her wood fire stove, drawing customers

from nearby farms and fellow mothers on market day. To fill empty seats, she used her newly gained digital skills—posting daily menus on WhatsApp groups and sending photos of steaming plates to local contacts.

Today, Emily balances motherhood with entrepreneurship. Her hotel is more than a business; it's a testament to transformation proof that, with mentorship, a supportive community, and the right skills, a young bride can become the architect of her own future.

### 13.4 Sylvia Gilisho, 25, Olkimitare Cluster:



Married off at 16, fresh from her primary school, she felt like a child thrust into adult duties. “I would sneak off to play with neighborhood kids,” she laughed, remembering her husband’s anger and her mother-in-law’s disapproval as she swept floors and pounded grain under their roof.

Everything changed the day a friend nudged her to attend BCFK’s Bonga Forum. At first, Sylvia hesitated, what could a forum teach a dutiful daughter-in-law? But as she sat through sessions on self-care, family hygiene, and respectful partnership, a new confidence took root. Business-skills training unlocked doors she didn’t know existed: market analysis, cost calculation, and simple bookkeeping.

With a small seed fund from her husband and savings from odd jobs, Sylvia stocked a few grocery items in her shop. Profits trickled in and she quietly gathered neighboring women into a savings group. Today, Sylvia not only runs her own enterprise but leads weekly trainings on entrepreneurship, literacy and basic digital skills paying forward the mentorship that transformed her life.

From a teenage bride confined to household chores, Sylvia has become a community pillar: a shopkeeper, a savings-group founder, and a beacon showing that even the youngest wives can write new chapters of independence and impact.

## 13.5 The Story of Meiruræ Women’s Group – Olesere Cluster

The Community Managed Savings Groups (CMSG) is a strategy that aims to empower women financially. It seeks to enhance financial literacy and foster a culture of savings among the deprived women in rural areas. The Basecamp Foundation Kenya initiated this program in the Mara region in 2012 and as of now, it boasts of 95 mature groups with a membership of over 1600 individuals, the majority of whom are women.

### 13.5.1 Background

Meiruræ Women’s Group was formed in 2021 and now comprises 30 active members from the Olesere cluster. They began with a simple savings-and-lending model to support each other’s household needs and small enterprises. United by a shared vision of economic empowerment, the group decided to invest in a collective income-generating asset.

### 13.5.2 Project Implementation

The women secured a small parcel of land at Olesere Trading Center through group savings and local negotiations. They constructed an iron-sheet rental structure, which they leased to a local tenant operating a retail business. Rental income flows directly into a communal fund governed by transparent record-keeping and monthly group audits.



*The single structure owned by the Meiruræ Women's Group*

### 13.5.3 Outcomes to Date

- ◇ Consistent rental revenue has doubled the group’s monthly savings capacity.
- ◇ Group members report increased financial confidence and reduced reliance on high-interest loans.
- ◇ The pooled funds now cover operating costs and leave a surplus for future investments.

### 13.5.4 Sustainability Model

The group’s governance structure ensures that rental proceeds are reinvested strategically. A rotating committee oversees fund allocation for new land

acquisition, construction of additional rental units, and seed capital for member-led enterprises. This asset-based approach secures steady cash flow and builds long-term equity for all members.

### 13.5.5 Future Expansion Plans

- ◇ Acquire adjacent plots in Olesere Trading Center to build two more rental units.
- ◇ Develop micro-enterprise grants for members to launch agro-processing and value-addition ventures.
- ◇ Partner with financial institutions to explore low-interest installment financing for construction materials.



*Fig 2 & 3: BCFK staff engaging with Meirurue Women's Group members*

### 13.5.6 Donor Engagement and Support Needs

To accelerate their growth trajectory, Meirurue Women's Group seeks partnerships and grant support for:

- ◇ Purchasing additional land parcels.
- ◇ Constructing two new rental structures.
- ◇ Training in advanced financial management and asset planning.

With donor investment, these women will transform a single rental unit into a diversified portfolio of community-owned assets, driving sustainable livelihoods and local economic growth.

### 13.6 Nasieku's Journey: From Silent Struggles to Empowered Living - Ntipilikwani

Meet Nasieku Musukut, a determined woman from Ntipilikwani whose story reflects the quiet strength of many rural girls navigating early marriage and economic dependence. Married at just 19, Nasieku entered adulthood with little preparation for the responsibilities that awaited her. "I didn't know what it meant to be a wife," she shares. "I had to wait for my husband to give me money for food, soap, literally everything."



Motherhood brought even greater challenges. With a newborn to care for and no income of her own, Nasieku felt the weight of helplessness. But in 2017, a spark was lit. Some girls her age invited her to attend Bonga Forums by Basecamp Foundation Kenya. Though skeptical, she joined, more out of curiosity than conviction.

At first, she attended passively. But slowly, something shifted. The sessions became more than just meetings; they became mirrors of possibility. She watched her peers begin small businesses, save in merry-go-rounds and speak confidently about loans and repayments. Relationship skills were also taught, helping her rethink how she engaged with her family and community.



*Nasieku is displaying her clothes, which she sells to the locals*

With encouragement and new knowledge, Nasieku began saving. Her first investment was modest: one sack of charcoal, delivered by her husband. She sold it to neighbors and reinvested the profits. Demand grew and so did her

confidence. She took a small loan and expanded into selling clothes and slippers within the village.



*Nasieku is selling charcoal from her store to one of her customers*



Today, Nasieku is no longer waiting; she's planning. She provides for her family, makes independent financial decisions and continues to attend Bonga Forums not just as a learner, but as a role model. "I tell other girls to come," she says. "These sessions are powerful. They teach you how to stand on your own."

Nasieku's story is a testament to the power of community-led transformation. From silent

struggles to empowered living, she reminds us that change begins with one step and one sack of charcoal.

### **13.7 Naboru Morijoi – Rekeru's Resilient Entrepreneur - Rekeru**

In the heart of Rekeru, we meet Naboru Morijoi, a mother of six whose story reflects the resilience and transformation of many rural women. Married off at the tender age of 15, Naboru was thrust into adulthood with heavy societal expectations and no source of income. Dependent solely on her husband, she endured periods of hunger and hardship, especially after becoming a mother.



Determined to change her circumstances, Naboru began seeking menial jobs within her community. The earnings were meager, but they sparked a desire for independence. Her turning point came when a friend introduced her to Basecamp Foundation Kenya's women empowerment sessions in Rekeru. She attended eagerly, immersing herself in business trainings, start-up support, and bonga forums.



With discipline and hope, Naboru began saving through her women's group. She took a small loan and launched an egg-selling business, which quickly turned a profit. Encouraged, she repaid the loan and took another to start chicken rearing, building a modest coop and dreaming of a sustainable poultry venture.



Her commitment to saving and reinvesting grew her shares and her confidence.



The women's group also initiated a merry-go-round system, enabling members to purchase household items and uplift their living standards. As her chickens matured and began laying eggs, Naboru secured a supply deal with Rekeru Comprehensive School, selling eggs and chickens to her peers and the school. Her husband became an active supporter, helping with deliveries and customer outreach.



Inspired by her progress, Naboru started a kitchen garden, growing local vegetables to improve her family's nutrition. Using bird droppings as manure, she continues to apply lessons from Basecamp's trainings. Her home is now a hub of productivity and purpose.



In addition to poultry and farming, Naboru practices Maasai beadwork, selling pieces locally and via WhatsApp. However, she faces challenges: limited internet access and zoning restrictions that prevent Rekeru women from selling in Lemek, where tourist camps offer better market opportunities.

Despite these barriers, Naboru remains grateful. She credits Basecamp Foundation Kenya and its partners for the knowledge, support, and community that helped her reclaim her dignity and transform her life. Her story is a testament to what happens when women are empowered to lead, earn and inspire.



**BASECAMP FOUNDATION KENYA**



Promoting Culture as a  
source of Innovation  
**ENTREPRENEURSHIP**



Environment / Energy –  
Community Development  
Renewable Water Harvesting Root  
**ENVIRONMENT / ENERGY**



Parenting  
seminar –  
Midweek/After  
school Forum

**EMPOWERMENT**

Empowerment –  
Community  
Messaging  
Savings Groups  
(CVSG) –  
CVSG Cluster



... leave a positive footprint



## **BASECAMP FOUNDATION KENYA**

To partner with us, donate using the banking details below:

*Account Name : BASECAMP FOUNDATION KENYA*  
*Postal Address : 43369 Nairobi Kenya 00100*  
*Account Number : 0221005805*  
*Bank : Absa Bank Kenya PLC*  
*Branch : HURLINGHAM BRANCH*  
*IBAN : BARCKENXXX*  
*Currency : USD*



Scan the QR Code to read  
this document online

*Head Office: Karen Triangle Mall, Karen Road (Off Ngong road)*  
*Postal Address: P O BOX 43369- 00100*  
*Telephone: (+254) 0773648109/ 0725447130*

[www.basecampfoundationkenya.org](http://www.basecampfoundationkenya.org)

... leave a positive footprint

